



**PHOTON™**  
**OPERATION**  
**MANUAL**

For your safety and continued enjoyment of this Product, always read the Operation Manual carefully before using.



# SAFETY PRECAUTIONS

---

## OPERATION PRECAUTIONS

Keep this Operation Manual for future reference.

For use in the sauna, initially limit sauna session frequency to 1 per day and session duration to 20 minutes.

Turn on Panel only if you will use immediately or to preheat immediately prior to use.

Turn off Panel immediately after use.

Targeted area of body must be 12" to 24" from the operating bulb of the Photon™ Panel.

Remove bulb before assembling, disassembling or cleaning the Panel.

Avoid direct water, liquid or metal contact with bulbs. Unexpected lamp rupture may cause injury, fire, or property damage.

Risk of Fire. Keep combustible materials including Sauna Cover away from bulbs.

Risk of Burn. Do not touch operating bulbs and bulbs that were recently turned off.

Bulb emits IR radiation which may cause eye injury. Do not stare directly at operating bulbs. Do not use on infant, disabled, sleeping, or unconscious person or any person unable to avoid potential injury.

Do not use this Product if you are impaired in any way by alcohol or illicit drugs and do not consume alcohol or drugs during use.

## ELECTRICAL PRECAUTIONS

Do not plug into an overloaded circuit, or an ungrounded circuit.

Do not touch Panel nor its power cord if you are wet.

Route power supply cords so as to keep them from being walked on or damaged.

**Power Supply Requirements.** Panel is intended only for use with a 3-conductor power socket that is properly grounded. The Photon™ is rated for 250W max. This Product may only be operated in minimum 13A (maximum 20A) grounded electrical supply circuit with 50/60Hz 110-240VAC voltage .

**Power Supply Voltage.** Use 120V-rated bulbs only with 110-120V

power supply & use 240V-rated bulbs only with 220-240V power supply.

Inspect Power Cord. Always inspect power cord and Panel itself including lamp socket, switch and Faraday Bulb Guard for damage before operating Panel. If any parts of Panel appear to be damaged, immediately turn off Panel and unplug from power source. Contact SaunaSpace® Customer Service for repair and/or replacement.

## **MEDICAL & HEALTH PRECAUTIONS**

Consult your health care provider prior to using this product.

Pregnancy. Do not use the sauna if you are pregnant.

Implants. Consult your health care provider regarding use of the sauna if you have any type of implant.

Prescription Medication. Consult your physician prior to using the sauna if you take prescription medication.

Children. Children should not use nor operate Panel nor enter sauna without proper adult supervision and approval of their health care provider.

Danger of Hyperthermia. Do not allow your body's core temperature to exceed 103°F (39.4°C).

Healing Reactions. They occur with sauna use and are temporary symptoms that occur as toxic substances are eliminated and chronic infections heal. Symptoms vary, but mild odors, tastes or rashes are very common and usually pass quickly. Some people feel great fatigue after sessions and this is normal. Some people have bowel changes, aches, pains or headaches.

# DISCLAIMER

---

Always consult a health care provider who is knowledgeable in sauna use before using a sauna. Saunas are powerful devices and monitoring your progress by a professional trained in sauna use is always advisable.

Sauna therapy can be dangerous and even fatal for some people under some circumstances. If you are considering sauna therapy, you must first seek the advice of your health care provider about sauna therapy and should also become educated as to the proper use of sauna, preparations for doing sauna therapy, as well as fully understanding the risks involved in sauna therapy.

Risks include, but are not limited to, cardiac failure, stroke, fainting, headache, nausea, weakness, rashes, hot flashes, dehydration, exacerbation of neurological symptoms, and even death. Variables of sauna therapy such as health condition of user, duration of sauna therapy, proper hydration, electrolyte and mineral balance and restoration must be properly considered and heeded before proceeding with sauna therapy.

SaunaSpace LLC (hereafter "SaunaSpace®") Products (hereafter "Products") are not registered with the United States Food and Drug Administration (FDA) as a Medical Devices. Consult your licensed health care provider to see if the SaunaSpace®'s Products are right for you. SaunaSpace® and/or its partners, associates, etc. are not liable for the use of SaunaSpace® Products nor any incidental or consequential damages. Under no circumstances shall SaunaSpace® Products or any of its representatives be held liable for injury to any persons or damage to any property. Some states do not allow exclusion or limitation of incidental or consequential damages, so the above limitations or exclusions may not apply to you.

The FDA requires us to inform you that this Product is not intended to diagnose or treat any disease or medical problem and is not a substitute for regular medical care from a licensed physician.

# TABLE OF CONTENTS

## **3 SAFETY PRECAUTIONS**

- Operation Precautions
- Electrical Precautions
- Medical & Health Precautions

## **5 DISCLAIMER**

## **7 SAUNA THERAPY**

- Why Sauna Therapy?
- The Near Infrared Advantage

## **8 SPECIFICATIONS**

- Photon™ Panel
- Parts List

## **9 SETUP**

- Attach Panel Clamps (Optional)
- Install Bulbs

## **11 OPERATION GUIDE**

## **13 PRODUCT CARE**

## **14 LIFETIME WARRANTY**

## **15 RETURNS & REPAIRS**

- 100 Day Trial
- How to Return or Exchange Your Product?
- What about Warrantied Repairs?
- What about Non-Warrantied Repairs?

# SAUNA THERAPY

---

## WHY SAUNA THERAPY?

Throughout history, humans have used sauna therapy, also known as hyperthermic therapy, as a safe and powerful means of detoxification. Sauna therapy heats the body, dramatically increasing blood-flow to the vital organs and skin, unlocking even hard to reach toxins. Sweating during vigorous exercise can raise the body temperature, but the “fight or flight” (sympathetic) state decreases deep organ blood flow. When you work-out you sweat, but you don’t detox much at all. Only in a “rest & digest” (parasympathetic) nervous state will sweating result in detoxification. Like sweating in a sauna.

## THE NEAR INFRARED ADVANTAGE

Near infrared (NIR) light and heat therapy has the power to change your body and mind. The beneficial effects positively impact acute and chronic infections, skin rejuvenation, the immune system, aging and longevity, and more.

### DEEP TISSUE PENETRATION

Higher energy NIR light (versus lower energy far infrared) can penetrate up to 9 inches into the body reaching even internal organs. NIR lamp therapy provides improved cellular healing and energy compared to far infrared emitters, an important difference. Toxin protection, anti-inflammation and pain relief are additional benefits.

### PHOTOTHERAPY

Specific wavelengths of near infrared light are absorbed by mitochondrial photoreceptor proteins, directly activating increased metabolism, healing and detoxification processes in the cells and tissues.

### SAFETY & EFFICIENCY

Incandescent near infrared bulbs are both ultra-low EMF and energy-efficient. NIR bulbs provide the therapeutic effects inherent in the NIR band of natural sunlight, but without the harmful ionizing UV radiation.

# SPECIFICATIONS

---

## PHOTON™ PANEL

Brand: SaunaSpace®

MPN: 56171001

Wood Species: Tilia americana (Basswood)

Weight: 4.375 lb (1.98 kg)

### PANEL DIMENSIONS

Width: 13.6 in (34.6 cm)

Height: 7.5 in (19.5 cm)

Depth: 9 in (22.9 cm)

### BASE DIMENSIONS

Width: 12.5 in (31.75 cm)

Height: 10.9 in (27.7 cm)

Depth: 1 in (2.6cm)

### ELECTRICAL INFO

Voltage: 110-240 VAC

Amperage: 2.1 A

Wattage: 250 W

Frequency: 50-60 Hz

Plug Type: B (USA), F (EURO), G (UK); I (AU/NZ) or J (SWISS)

Shielded Removable Power Cord Length: 10 ft (3 m)

All electrical components UL-listed.

This product is CE-certified.



## PARTS LIST

QUANTITY	PART
1	Photon™ Panel
1	250W (120V OR 240V) Red-Filtered Incandescent Bulb
2	Turnkey Mounting Clamp
1	Removable Shielded Power Cord (10 Ft, 3 m)
1	Ground Power Cord Plug Sleeve
1	Grounding Cable (3.3 ft, 1 m)
1	Baseplate



# SETUP

---

## ATTACH PANEL CLAMPS (OPTIONAL)

**Optional, only necessary for use clamped to Luminati™ Frame Pole or other Pole.**

Install Clamps into Light Panel's Bracket Slots as shown:

1. Rotate TurnKey counter-clockwise to loosen until bare end of Clamp Strap is released from TurnKey screw.
2. With TurnKey pointed toward Light Panel, insert bare end into Bracket Slot.
3. Close Clamp by inserting bare end into TurnKey Screw and rotating TurnKey clockwise.

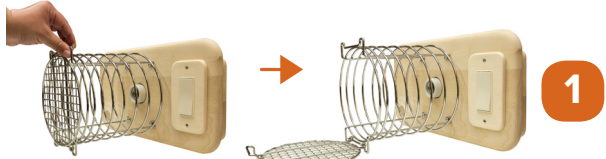


# INSTALL BULBS

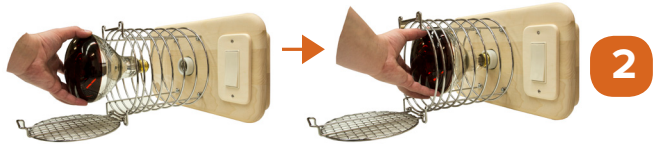
## CAUTION

Take care not to cross-thread bulbs during installation, which may result in damage to the bulb and/or socket.

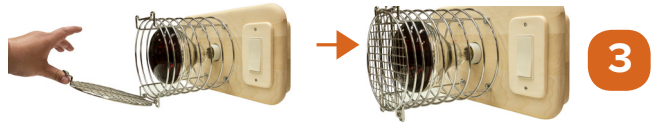
**1)** Open Door fully by pulling on latch and pushing against adjacent wire tabs.



**2)** Insert bulb as shown and carefully thread clockwise into socket.



**3)** Close door and ensure latch snaps onto guard body securely.



US, Canada, Japan, Taiwan, other select countries:  
Only use 120V-rated bulbs.

UK, Europe, Middle East, Asia, Australia, most other countries:  
Only use 240V-rated bulbs.

SaunaSpace® stocks both 120V and 240V bulbs for wherever you'll use your SaunaSpace® Products, available at [saunaspace.com](https://saunaspace.com).

# OPERATION GUIDE

---

## **DURATION**

Use the lamp 5 to 60 minutes per session.

When pointing at head (ears, sinuses, etc.), use no more than 10 minutes at a time, and maximum 5 minutes for children.

## **FREQUENCY**

Up to 10 times per day.

## **SUPERVISION**

The presence of an attendant or friend close by is recommended if you have any type of health condition.

## **OPERATION OUTSIDE LUMINATI™ SAUNA**

### **CLEARANCE**

Sit with desired area of body 12 - 24 in (30-60 cm) from the bulb.

### **MOVEMENT**

Move the Panel around the area during the treatment.

If the Panel is fixed, move the body slightly.

Allow the area to become as hot as one can comfortably tolerate.

Keeping the lamp on one spot for more than a few minutes causes a slight reddening of the skin that will go away and is not harmful.

Do not touch the Faraday Bulb Guard nor bulb and do not keep it on one spot if you feel a burning sensation.

### **TURN OFF**

Remember to turn off Panel after use.

# OPERATION INSIDE LUMINATI™ SAUNA

## INSTALLATION

Clamp to one of the vertical frame poles under or above existing Tungsten™ Panel, using provided clamps threaded into receiving brackets on rear of Panel. Refer to *ATTACH PANEL CLAMPS* before this section.

## CLEARANCE

Sit with 18" to 30" clearance from the Tungsten™ Panel.

## TURN OFF

Remember to turn off Photon™ and Tungsten™ after use.

## GENERAL PRECAUTIONS

**Never use lying down without supervision; always use while seated and awake.**

**Close the eyes when directing the bulb at the eyes, nose or sinuses.**

**Do not use on an injury for the first 24 hours following the injury.**

**Avoid touching the Faraday Bulb Guard face during operation.**

**Always place Panel on included base when setting it on a horizontal surface.**

# PRODUCT CARE

---

## **PHOTON™ PANEL**

Unfinished wood must be protected from sources of water and conditions of high humidity.

# LIFETIME WARRANTY

---

SaunaSpace LLC (hereafter referred to as "SaunaSpace®") recognizes that certain natural materials components such as wood, cotton and steel used in its Products (hereafter referred to as "Products") have naturally occurring blemishes, discolorations, minor imperfections, knots and irregular character and grain. These naturally occurring irregularities are not considered defects in materials for the purpose of this warranty, providing they do not adversely affect the functionality of the Product.

SaunaSpace® warrants to the original consumer purchaser that its Products will be free from defects in materials and workmanship appearing under normal individual consumer use. This warranty does not cover damage to Products caused by abuse, acts of God, mishandling, unauthorized repair or your failure to consult a licensed health care provider regarding proper use of this product. This warranty specifically excludes heat lamp bulbs.

THIS WARRANTY IS IN LIEU OF ALL OTHER EXPRESS WARRANTIES; AND ANY IMPLIED WARRANTIES, INCLUDING BUT NOT LIMITED TO ANY IMPLIED WARRANTY OF MERCHANTABILITY OR FITNESS FOR PARTICULAR PURPOSE, ARE LIMITED TO THE DURATION OF THIS WARRANTY. IN NO EVENT WILL SAUNASPACE® BE LIABLE FOR ANY INCIDENTAL OR CONSEQUENTIAL DAMAGES.

Some states do not allow limitations on how long an implied warranty lasts and/or the exclusion or limitation of incidental or consequential damages, so the above limitation and/or the above exclusion may not apply to you. This warranty gives you specific legal rights, and you may also have other rights which vary from state to state. As its sole responsibility and your sole remedy for any warranted defect, SaunaSpace® will repair or replace any defective part of its Products, containing a warranted defect, free of charge, and with notification within a reasonable period of time (but no longer than 6 months) following the discovery of such defect.

# RETURNS & REPAIRS

---

## 100 DAY TRIAL

You have up to 100 days to test your SaunaSpace® Product and decide if it suits you.

## FREE RETURN SHIPPING IN USA & CANADA OVER \$248

We think you'll keep it. But if not, you can return it during the 100 Day Trial for a 100% refund. As long as the SaunaSpace® Product is still in "like new condition" we will refund the full purchase price. If you roughed it up a bit, that's okay. We may deduct a proportional amount from the refund to cover the cost of repair of the damaged component.

## RETURN SHIPPING IN USA FOR ORDERS UNDER \$248

Equivalent to the actual cost to return-ship. We will issue you pre-paid FedEx return ship labels. We will deduct the return ship cost incurred from the refund.

## RETURN SHIPPING FEE FOR ALL INTERNATIONAL DESTINATIONS

Equivalent to the actual cost to return-ship. We will issue you pre-paid FedEx return ship labels. We will deduct the return ship cost incurred from the refund.

## REFUND PROCESS

You may either exchange the product for the same product or receive a refund for amount of the purchased product. **Refunds on returned products will be issued in the same payment form as tendered at time of purchase.** Payments made by credit card will be reimbursed to your account after we receive and inspect the item. Please allow 7-14 days for a credit to appear on your credit card statement.

# HOW TO RETURN OR EXCHANGE YOUR PRODUCT?

## 1. Email us, describing reason for return/exchange & desired return method, **DROP-OFF** or **PICKUP**

- **Email** sales@saunaspace.com
- We will email you pre-paid FEDEX labels for the return ship.

### **For DROP-OFF at your local FEDEX Office or Customer Center:**

- Labels emailed to you may only be used for drop-off
- Drop-off may occur any date on or after labels are received, for up to 10 days.

•

### **For PICK-UP at your address:**

- Indicate the desired pickup date and time window
- Pickup date must be at least 24 hours ahead of schedule date
- Pickup time window must be minimum 4 hrs, during 8am – 6pm local time.

## 2. Pack Return Items Into Boxes

- Re-pack the item(s) into original shipping carton exactly as received. It is important to place the custom foam pieces correctly to protect the components during transit.
- Failure to do so may cause the components to become marred and incur a reduction in your refund
- Tape carton(s) securely shut.
- Print the pre-paid FEDEX labels we emailed you and affix pre-paid labels to appropriate box(s).
- Please note dimensions and item descriptions for each label, as each label is meant for appropriate box size and weight.

## 3. SHIP

DROP-OFF at your closest Fedex location or wait for your scheduled PICK-UP.



## 100 DAY TRIAL RETURN POLICY RULES

- Claims for items missing or damaged in transit must be received within five (5) business days. We are not responsible for lost or damaged packages.
- All returned or exchanged items must be in "like-new" condition, in their original shipping carton, and must include all packing material and all parts. Products must be undamaged, unmarred, and unstained. Any damage or staining that occurs to the products during your Trial Period may result in a proportional reduction to your refund. Use the product with care!
- Goods will be carefully inspected upon return and photos taken of how packages are delivered by FedEx to our shop, how items were packed and any damage or staining of items.
- Identified damages due to user abuse may result in proportional reduction of refund amount.
- Please take care to re-pack items exactly as received in order to avoid damage during return shipping. Damage due to poorly packed items are not covered by the included shipping insurance and will be deducted from refund.
- SaunaSpace® is not responsible for personal data or items left in returned merchandise.
- SaunaSpace® is not responsible for any consequential or incidental damage resulting from the sale or use of any product bought from us. We are responsible for the monetary value of the product only.

## WHAT ABOUT WARRANTIED REPAIRS?

Refer to the *LIFETIME WARRANTY* of this Operation Manual.

All our SaunaSpace® Products are warranted against defects in manufacturing and workmanship under individual consumer use, as per our Lifetime Warranty.

You will pay shipping cost both ways, to us and back to you.

5-10 business days will be required for repair or replacement before your repaired product or replacement product is shipped out to you. All repaired or replacement products will be shipped by ground courier service and a tracking number will be emailed to you once the shipment is in transport.

At our discretion, we may ship out a replacement part in lieu of return-repair. In this case, you pay ship cost to mail the replacement part to you.

Refer to *HOW TO RETURN OR EXCHANGE YOUR PRODUCT?* above to return your Product for repair.

## WHAT ABOUT NON-WARRANTIED REPAIRS?

Rest assured that our Handmade Products are built with strict quality controls and will last many, many years if properly taken care of according to the Product's Operation Manual. For non-warranted repairs, you pay shipping cost both ways, to us and back to you.

Refer to *HOW TO RETURN OR EXCHANGE YOUR PRODUCT?* above to return your Product for repair.

# CONTACT US

saunaspace.com  
sales@saunaspace.com

+1 573-66SAUNA, 8am-5pm CST  
Monday-Friday excluding holidays

1330 E Prathersville Road  
Columbia, Missouri 65202 USA

